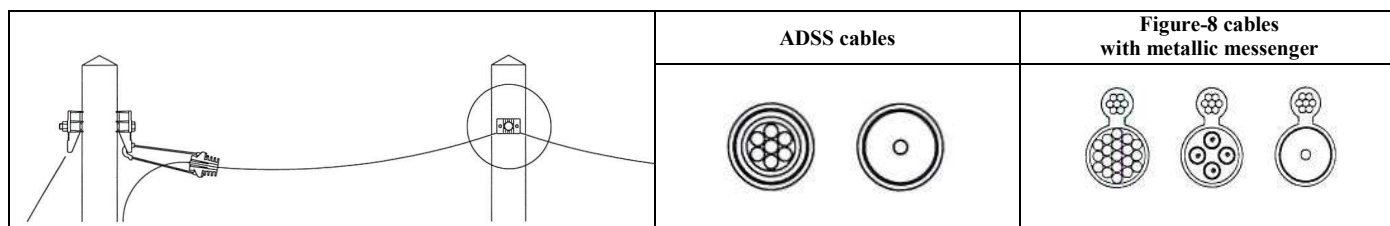


## In-line Suspension Belt SS1025



### Description

The SS1025 is composed of a flexible polyester belt and a plastic ring.

### Installation

The SS1025 is installed with a shackle (SH600) on all types of brackets. To avoid rubbing, installation very close to the pole is not recommended. The stand-off design of the CS1500 bracket is ideally suited for this type of installation (see close photo).

### Function

The SS1025 is used for the suspension of ADSS cables and figure-8 cables. The flexible material used in the manufacture of the SS1025 has a long lifespan and adapts very well to wind-induced vibrations.

Material		Cable Ø over outer sheath		Max. vertical tension*	Weight kg	Packaging
Belt	Ring	ADSS cable	Fig-8 cable			
Polyester	Thermoplastic	0 – 30mm	Maximum height messenger + cable = 36mm	120 daN	0,100	300 pcs

\* A x3 safety factor is taken into account, and the clamps can withstand three times the maximum stringing tension indicated in this table.